

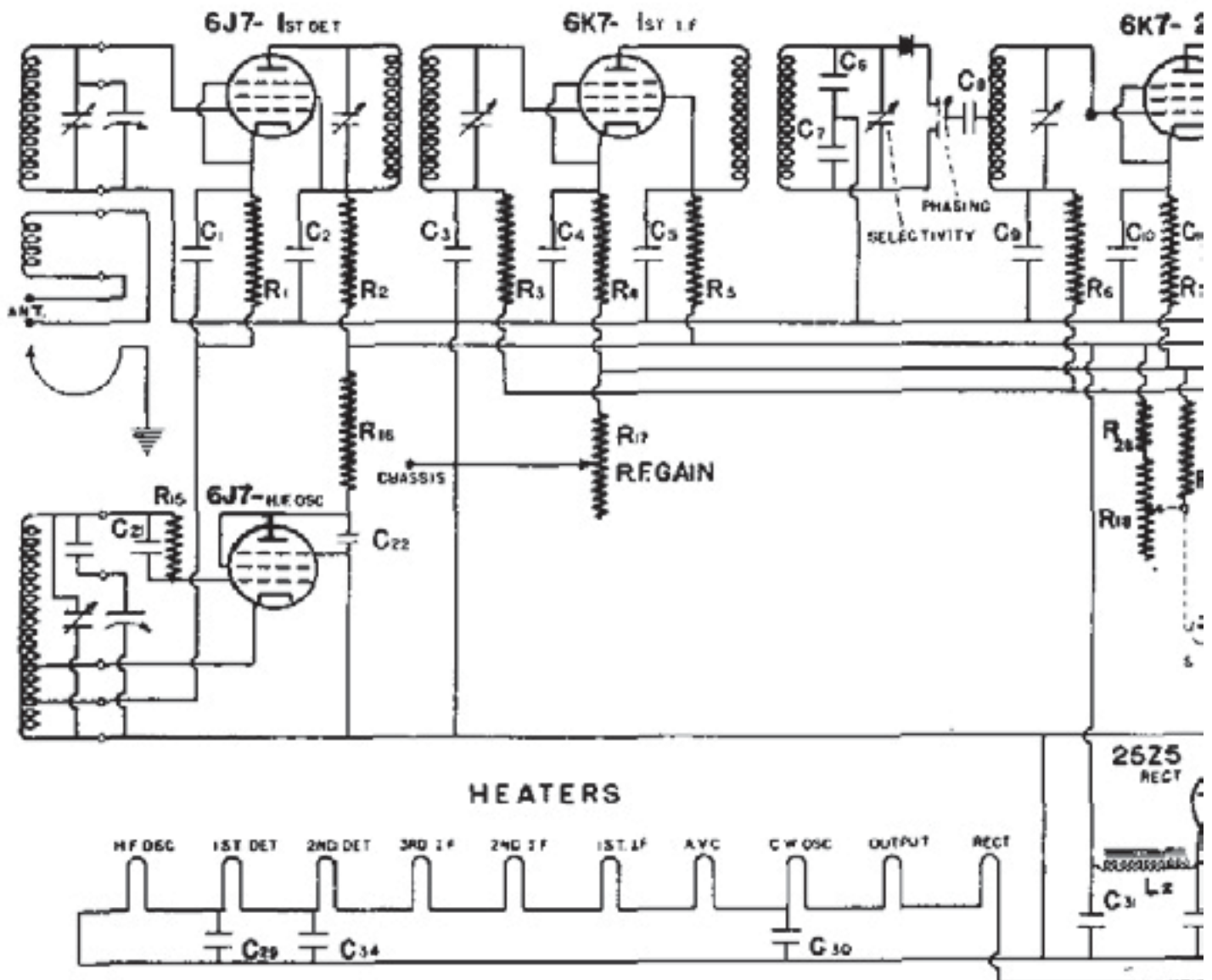
NC-80X AND NC-81X RECEIVERS

RESISTOR AND CONDENSER LIST

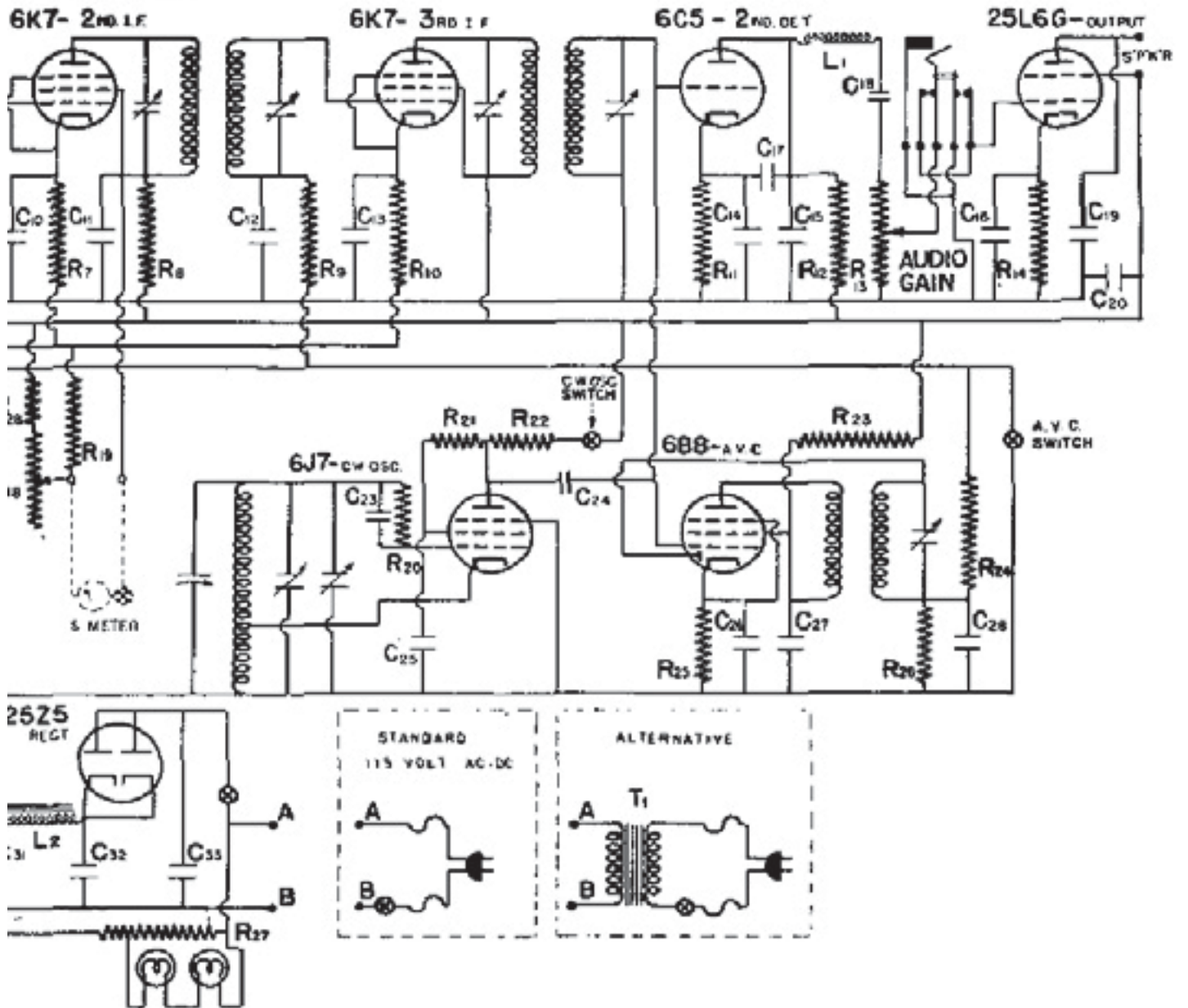
R1	1st Det. Bias	2,000 ohms	$\frac{1}{2}$ watt
R2	1st Det. Plate Filter	1,000 ohms	watt
R3	1st I.F. Grid Filter	.5 megohm	watt
R4	1st I.F. Bias	500 ohms	watt
R5	1st I.F. Plate Filter	1,000 ohms	watt
R6	2nd I.F. Grid Filter	.5 megohm	watt
R7	2nd I.F. Bias	500 ohms	watt
R8	2nd I.F. Plate Filter	1,000 ohms	watt
R9	3rd I.F. Grid Filter	.5 megohm	watt
R10	3rd I.F. Bias	500 ohms	watt
R11	2nd Det. Bias	20,000 ohms	watt
R12	2nd Det. Plate	50,000 ohms	watt
R13	Audio Gain	500,000 ohms	Variable
R14	Output Bias	140 ohms	1 watt
R15	H.F. Osc. Grid	20,000 ohms	watt
R16	H.F. Osc. Plate Filter	1,000 ohms	watt
R17	R.F. Gain	10,000 ohms	Variable
R18	S-Meter Balancing	1,000 ohms	Variable
R19	S-Meter Bridge	50,000 ohms	watt
R20	C.W. Osc. Grid	50,000 ohms	watt
R21	C.W. Osc. Screen	50,000 ohms	watt
R22	C.W. Osc. Plate	50,000 ohms	watt
R23	AVC Plate Filter	1,000 ohms	watt
R24	Grid Return Filter	.5 megohm	watt
R25	AVC Bias	5,000 ohms	watt
R26	AVC Diode Return	.5 megohm	watt
R27	Series Heater	93 ohms	10 watts
R28	S-Meter Bridge	2,000 ohms	$\frac{1}{2}$ watt
L1	2nd Det. I.F. Filter	12 mh.	
L2	Rectifier Filter	20 Henry	
C1	1st Det. Cathode	.1 mfd.	200 volt
C2	1st Det. Plate	.1 mfd.	200 volt
C3	1st I.F. Grid Filter	.01 mfd.	400 volt
C4	1st I.F. Cathode	.1 mfd.	200 volt
C5	1st I.F. Plate	.1 mfd.	200 volt
C6)			
C7)	Crystal Filter Bridge	145 mmf. ea.	Mica
C8	Crystal Filter Output	10 mmf.	Mica
C9	2nd I.F. Grid Filter	.01 mfd.	400 volt
C10	2nd I.F. Cathode	.1 mfd.	200 volt
C11	2nd I.F. Plate	.1 mfd.	200 volt
C12	3rd I.F. Grid Filter	.01 mfd.	400 volt
C13	3rd I.F. Cathode	.1 mfd.	200 volt
C14	2nd Det. Cathode	10 mfd.	50 volt
C15	2nd Det. Plate	.0005 mfd.	Mica
C16	Output Cathode	10 mfd.	50 volt



**SCHEMATIC**  
**NC-80X**  
RE



**Schematic Diagram**  
**BOX B NC-81X**  
**RECEIVERS**



Reworked by  
**PAØPGA**

This manual was downloaded from **BAMA's**  
 boatanchor site <http://bama.sbc.edu>



## NC-80X AND NC-81X RECEIVERS

### RESISTOR AND CONDENSER LIST CONT.

C17	2nd Det. Plate	.0005 mfd.	Mica
C18	Audio Coupling	.1 mfd.	200 Volt
C19	Output Plate	.001 mfd.	Mica
C20	Output Plate	.25 mfd.	200 Volt
C21	H.F. Osc. Grid	.0001 mfd.	Mica
C22	H.F. Osc. Plate	.1 mfd.	200 Volt
C23	C.W. Osc. Grid.	.0001 mfd.	Mica
C24	C.W. Osc. Coupling	2 mfd.	Special
C25	C.W. Osc. Screen	.1 mfd.	200 Volt
C26	AVC Cathode	.1 mfd.	200 Volt
C27	AVC Plate	.1 mfd.	200 Volt
C28	Diode Filter	.01 mfd.	400 Volt
C29	Heater Bypass	.1 mfd.	200 Volt
C30	C.W. Osc. Heater	.1 mfd.	200 Volt
C31)			
C32)	Rectifier Filter	40 mfd.ea.	200 Volt
C33	Line Bypass	.1 mfd.	400 Volt
C34	Heater Bypass	.001 mfd.	Mica
T1	Special Transformer	- See "General Description"	





# K4XL's

# BAMA

This manual is provided free of charge from the "Boatanchor Manual Archive", as a service to the Boatanchor community. It was uploaded by someone who wanted to help you repair and maintain your equipment.

If you paid anyone other than **BAMA** for this manual, you paid someone who is making a profit from the free labor of others, without asking their permission

You may pass on copies of this manual to anyone who needs it. But do it without charge.

Thousands of files are available without charge from **BAMA**. Visit us at: <http://bama.sbc.edu>

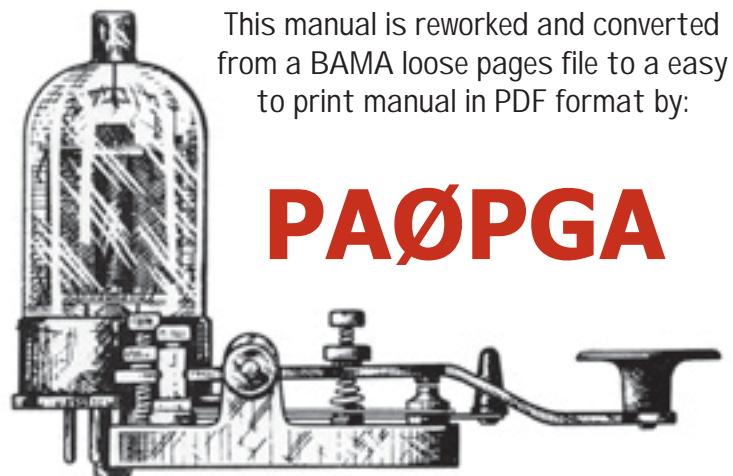
**Real radio's have tubes!  
Keep them glowing !!**

File credits:

**Ron Martinmaki  
W9EOA**

This manual is reworked and converted from a BAMA loose pages file to a easy to print manual in PDF format by:

# PAØPGA



Reworked by  
**PAØPGA**

This manual was downloaded from **BAMA's** boatanchor site <http://bama.sbc.edu>

